

AV SERVICES - TIMES SQUARE

DISNEY'S HOTEL NEW YORK® CONVENTION CENTRE

Experience business differently



A pre-equipped Room offering :

- Adapted packages
- Time saving to set-up and dismant
- Cost optimization
- Qualified and certified technicians

Our technicians are present for 10 hours + 1 hour for meal (maximum time 11 hours). Any overlap entails a new 10-hour paid shift. The rest period between two shifts must be a minimum of 11 hours.

Packages are offered all inclusive and their proper function is supervised by an operator (or assistant) who is a member of the Disneyland® Paris staff.



Structures

Grill - Trussing - High-Towers
Stage - Framework of Stage

- 1 Grill - Truss (Prolyte H30V) - Pts 1-2-3-4-5-6
- Above the stage - 22m x 5m on 6 motors
- 1 Back Truss (Prolyte H40V) - on High Towers
- Back of the Stage - 18m on 2 motors
- 1 Front Truss (P1) - Pts 7-8-9 - (Prolyte H30V)
- In front of the Stage - 21m on 3 motors
- 1 Front Truss (P2) - Pts 10-11-12 - (Prolyte H30V)
- In the front of the room - 21m on 3 motors
- 1 Truss (P3) - Pts 13-16-19-22-25 on 5 motors
- 1 Truss (P4) - Pts 14-17-20-23-26 on 5 motors
- 1 Truss (P5) - Pts 15-18-21-24-27 on 5 motors
- 3 x 21m (Prolyte H30V) - Length of the room

Stage - 14m x 6m Height 0.80m
(50 elements of 2m x 1m + 2 stairways)
Carpeting & Skirting not included
Framework of Stage 14m x 6.50m
Black Curtain, Black Border Legs
Black Sides of stage



Sound

Microphones - Mixing Desk
Sources - Sound Systems -
Talk back System

- 2 "Goose Neck" Microphones
- 2 Hand Wireless Microphones
- 1 Mixing Desk 32 channels (or on demand)
- 3 Omnidrives + 4 Equalizers
- 1 CD Player - Double Deck
- 1 Tape Recorder
- 1 DAT Recorder
- 1 Talk back System - RTS 2 canaux
- + 4 Bell Set wired & Headset
- 1 Line Array System (D&b - Q1 x 8)
- 1 Sub System (D&b - Q Sub x 4)
- 1 Front Fill (D&b - C6 x 4)
- 2 Subs (D&b - B2 x 2)
- 1 Delay in the room (D&b - c6 x 4)

Option for Front Audio - More Powerful
4 Speakers (D&b - C7) on floor



Lights

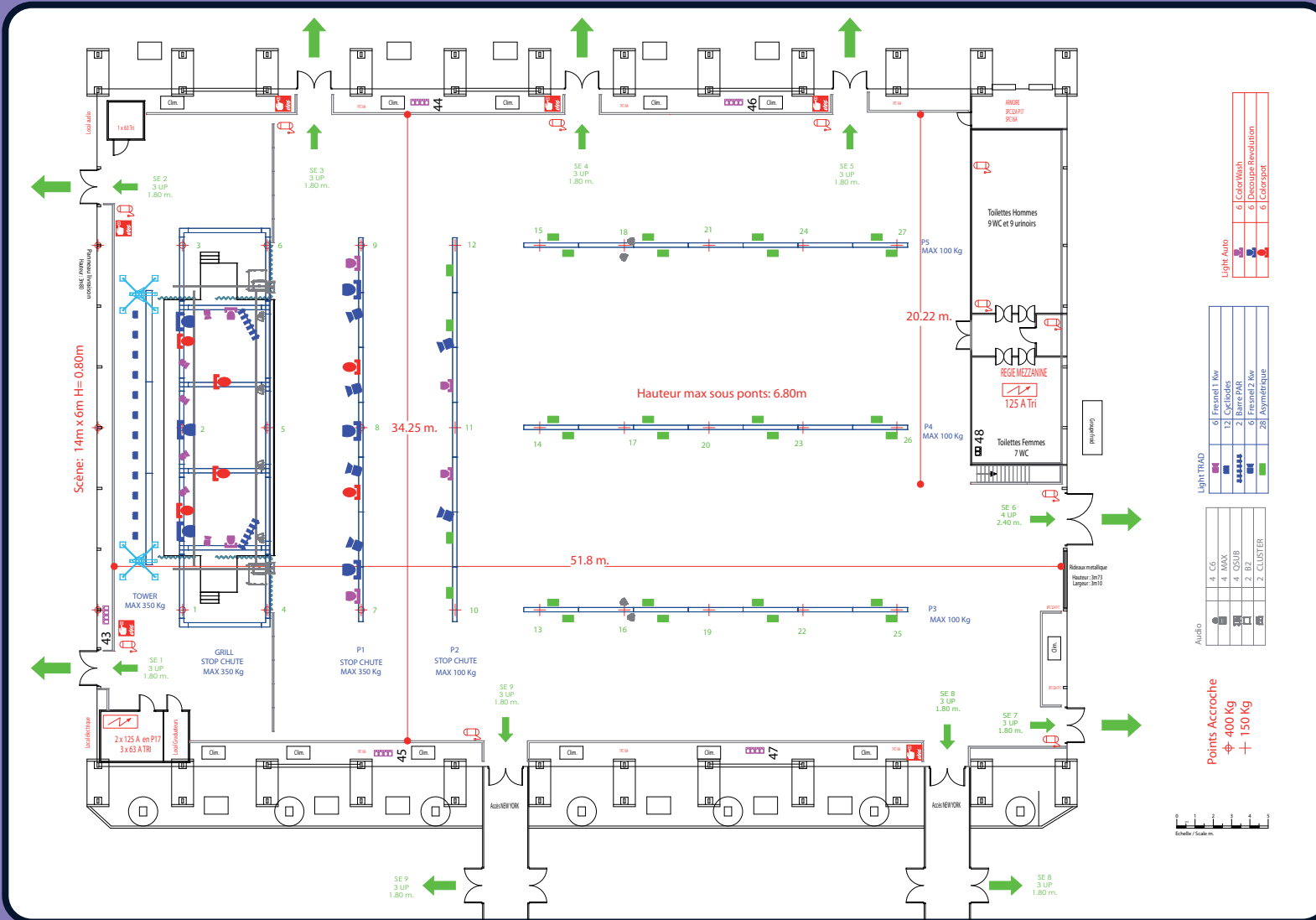
Traditional Projectors
Moving Lights
Control Lighting Desk

- 1 Lighting Control Desk
- 6 Automatic Profiles 750W
- 6 Moving Lights Wash (Robe 575W AT)
- 6 Moving Lights Spot (Robe 575W AT)
- 6 Fresnels Projectors 1kW
- 6 Fresnels Projectors 2kW
- 12 Asymmetric headlamps 1kW
- 2 Bars of 6 Pars - Par 64
- 28 Asymmetric headlamps - In the room
- Dimmers - 96 x 3kW
- Splitters & cables
- Stop Fall systems

AV SERVICES - TIMES SQUARE

DISNEY'S HOTEL NEW YORK® CONVENTION CENTRE

Experience business differently



Light Auto	6	Cable/Wash	6
	6	Decor/Revelation	6
	6	Catapult	6

Light/TRAD	6	Fresnel 1 Row
	12	Cyclables
	4	Barre
	4	CL2 Row
	28	Asymétrique

Audio	1	CG
	4	MAX
	4	CSUB
	2	RZ
	2	CLUSTER

Points Accroche
 ◊ 400 Kg
 + 150 Kg

PACKAGES

Package* rates:
 The "Structures" Package: €1,420 excl. VAT/day
 The "Stage" Package: €550 excl. VAT/day
 The Stage Dismount: €4,650 excl. VAT

The "Audio" Package: €1,570 excl. VAT/day
 The front backup: €275 excl. VAT/day
 Dismount (in case of disturbance), €1,596 excl. VAT

The "Lights" Package: €1,570 excl. VAT/day
 Dismount (in case of disturbance), €1,596 excl. VAT

The material for rent is submitted to coefficients on a sliding scale:

- 1 day = x 1
- 2 days = x 1.5
- 3 days = x 2
- 4 days = x 2.5
- 5 days = x 3

Labor rates*:
 Director €515 excl. VAT
 Light operator €499 excl. VAT
 Sound engineer €499 excl. VAT
 Technician Projectionist €459 excl. VAT
 Machinist €399 excl. VAT

* These prices are valid from 10/01/2011 to 09/30/2012.



Please contact us for more information or for a quote.

Area
1,700 m² (18,300 sq.ft)